

Notes: Notes of the 39th Meeting of the Maules Creek Coal Community Consultative Committee
Held at Boggabri Golf Club, 2 pm.

Wednesday 23 November 2022

Members Present: Clr Brett Dickinson (BD) – Narrabri Shire Council, Darren Swain (DS) – WHC, Elizabeth O’Hara (EOH) – Community Representative, Emma Bulkeley (EB) – WHC, Landon Brady (LB) – Narrabri Shire Council, Libby Laird (LL) – Maules Creek Community Representative, Steve Eather (SE) – Community Representative, Talan Breden (TB) – WHC, Robyn Grover (RG) – Community Representative

Apologies: Lyndell Crowley (LC) – Community Representative, Michelle Henry (MH) – Narrabri Shire Council, Robyn Grover (RG) – Community Representative

Independent Chair: David Ross (DR)

Independent Secretary: Debbie Corlet (DC)

Agenda Items	Who to Present
1. Welcome and Apologies	DR
2. Declaration of pecuniary or other interests	DR
3. Confirmation of the Minutes of the previous meeting – Wednesday 24 August 2022	DR
4. Business arising from the previous minutes – Action List Distributed	DR
5. Company Overview	WHC
6. Next Meeting – Wednesday 22 February 2023	ALL

Agenda Item	Discussion	Action/By Whom
1.	Welcome and Apologies – DR welcomed everyone to the final meeting of the year.	
2.	Declaration of pecuniary or other interests – DR is paid a fee as chair as is DC for typing the minutes. EOH has a small bundle of WHC shares. RG has a daughter at Maules Creek.	
3.	Confirmation of the Minutes of the previous meeting – Members were comfortable with the notes from the site visit.	
4.	Business Arising from the previous minutes DR – There was only one action, which has been completed.	
5.	<p>Company Overview</p> <p>Report & Overview of Activities – WHC achieved a record average coal price for the quarter. MCC ROM coal production of 1.8Mt for the quarter. MCC have achieved first quarter FY23 Recordable Injury Free.</p> <p>Health and Safety – Q1 FY23 – COVID 19 Management – Continued monitoring of compliance with current COVID-19 preventative measures. Ensuring the workforce remains informed. COVID and Influenza Vaccination scheme in place. Improvement focus for Fatigue & Chemical Management onsite.</p> <p>EB – Access to the site flooded with the bridge going under. Continued by rail with skeleton staff. Accessing site via helicopter.</p> <p>Operator Alertness System – Why have we implemented the OAS system? TB presented on this, noting that the system has been implemented to monitor and detect operator fatigue / unsafe acts to avoid harm to people. The system includes an IR Camera, Computer, Speaker, Seat Vibrator, Forward Camera. Fitted on specific equipment (-52 units currently).</p> <p>Worker fatigue management, nevertheless, remains the responsibility of the worker to present fit for work. The system does not replace the current fatigue management processes. All unsafe acts will be investigated and may result in disciplinary action up to and including termination.</p> <p>Environmental Monitoring – All data is summarised in detail in the Monitoring Report supplied. Air quality monitoring was described by EB, observing that it remained below the relevant project approval criteria.</p>	

6.	<p>General Business</p> <p>EOH – Noted that decisions have been made by the Environment Ministers on 21 October 2022 to “work with the private sector to design out waste and pollution, keep materials in use and foster markets to achieve a circular economy by 2030” and “that the Australian Government add end of life tyres to the Minister’s Product Stewardship Priority List, signalling the intention to regulate should industry not lift its game.” She then asked for an update on tyre recycling.</p> <p>EOH – Could be something to talk to with the council as well and something that could be with the whole community.</p> <p>DS – Yes, we have 2-years to report on it.</p> <p>EB – Maybe get Scott Mitchell as he has been looking at the issue across the three mine sites.</p> <p>LL – Regarding local properties owned by WHC in the area, 1. How many are suitable for habitation? 2. how many are rented out and 3. how many have young children in them? We know there’s a lot of houses. Could be rented to people.</p> <p>DR: Yes in light of the housing crisis.</p> <p>LL: Definitely. Maintaining the houses is really important.</p> <p>DS – Happy to talk about that. Could give you some brief stats on this. Half the houses are still occupied with the same people that owned them originally.</p> <p>LL – What’s available? Overall, how many houses and where are the houses that could be available.</p> <p>LL – How much clearing is expected to go in 2023? The Maules Creek CWA request that in light of the climate crisis and the COP 27 consensus to phase out coal, the mine does not continue to clear.</p> <p>EB – MCCM is operating within its approval. All clearing will be reported to David.</p> <p>LL- There is no suggestion in the questions about operating outside the approval. This is a question for the multinational corporation that owns MCCM. As a large corporation, MC CWA are asking WHC to take responsibility as the climate crisis deepens and not clear in 2023.</p> <p>EOH commented on WHC response to question on notice from last time – re WHC consistently over-estimating in its EISs the quality of the coal that is produced from the mines in general and MC in particular. The response, that Whitehaven would not respond to a published Market Forces report, was disappointing.</p> <p>DR – Mindful that our numbers on the CCC are down. Have held off advertising due to what’s been happening with COVID and the flooding. Haven’t done further advertising re new membership. In the New Year will talk to people like Darren and Emma and will try and get additional members.</p> <p>DS – Application forms for CCC are on Maules and Tarrawonga websites.</p>	<p>ACTION 3 – WHC to invite Scott Mitchell to present on tyre management at next meeting</p>
----	---	--

	<p>DR – CCC Guidelines going through a revision at the moment. We'll need to discuss the Terms of Reference that each CCC will have in place, like frequency of meetings, possibility of using video conferencing, setting an expectation, what you want to talk about at a CCC.</p> <p>LL – (Re: ARTC presenting at the Joint CCC) Expressed concern with them attending. I know there's a relationship with ARTC and Mark Vaille, the chairperson of WHC, in that he set the ARTC up. It makes me uncomfortable.</p> <p>DR – This is my decision. I often try to get government representatives to attend these meetings. It has been a couple of years since ARTC presented.</p> <p>BD – The rail isn't just used for coal. There's cotton trains and others as well.</p> <p>LL – Request that the MCCM meeting take place the same day as the Joint CCC.</p> <p>DR – I would have to put it to the Boggabri Coal CCC about whether they would wish to swap.</p> <p>Some other members observed that they were happy with the current arrangement.</p> <p>A discussion then commenced on what could be scheduled for the next 12 months with respect to presentations. Some members observed that they appreciate the site visits to understand progression made.</p> <p>EB – We could present on the rehabilitation reforms.</p> <p>DR – Thanked everyone.</p> <p>Meeting closed at 3:12 pm.</p>	<p>ACTION 5 – DR to distribute revised CCC Guidelines 2 weeks prior to meeting</p> <p>ACTION 6 – WHC to present on the rehabilitation reforms</p>
7.	<p>Next meeting date– Next meeting will be on Wednesday 22 February 2023 2:00 pm, back at Boggabri Golf Club.</p>	

Meeting Closed: 3:12 pm

Appendix 1: Actions

Page No	Action No	Description	Date Raised
2	1	EB to notify DR when it goes on exhibition	23 Nov 2022
3	2	TB to include a slide on long-term fiscal approach to AHS	23 Nov 2022
4	3	WHC to invite Scott Mitchell to present on tyre management at next meeting	23 Nov 2022
4	4	WHC to respond to questions about properties owned	23 Nov 2022
5	4	DR to distribute revised CCC Guidelines 2 weeks prior to meeting	23 Nov 2022
5	5	WHC to present on the rehabilitation reforms	23 Nov 2022

Maules Creek Coal Mine

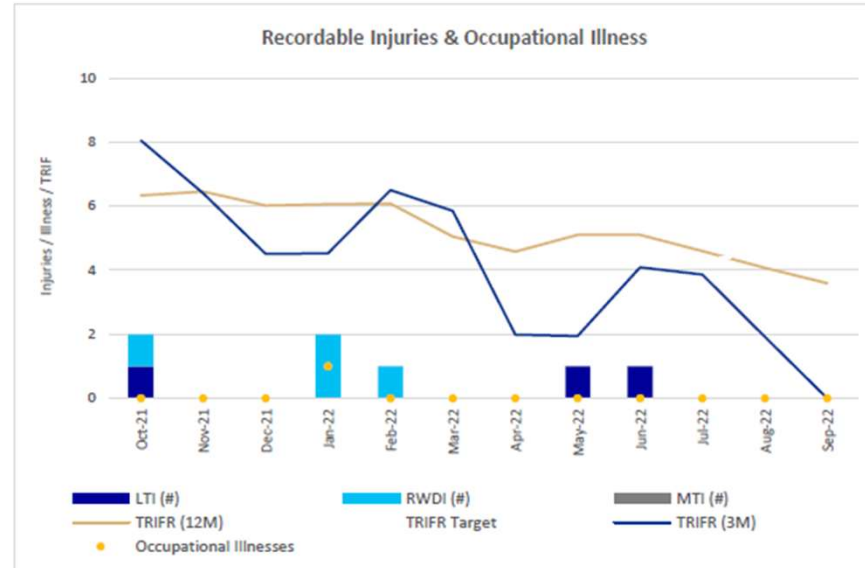
CCC MEETING

Maules Creek Coal Mine
November 2022



Company Report & Overview of Activities

- MCC have achieved first quarter FY23 Recordable Injury free
- September 2022 TRIFR (Recordable injured per million exposure hours): 0



Health and Safety

Q1 FY23

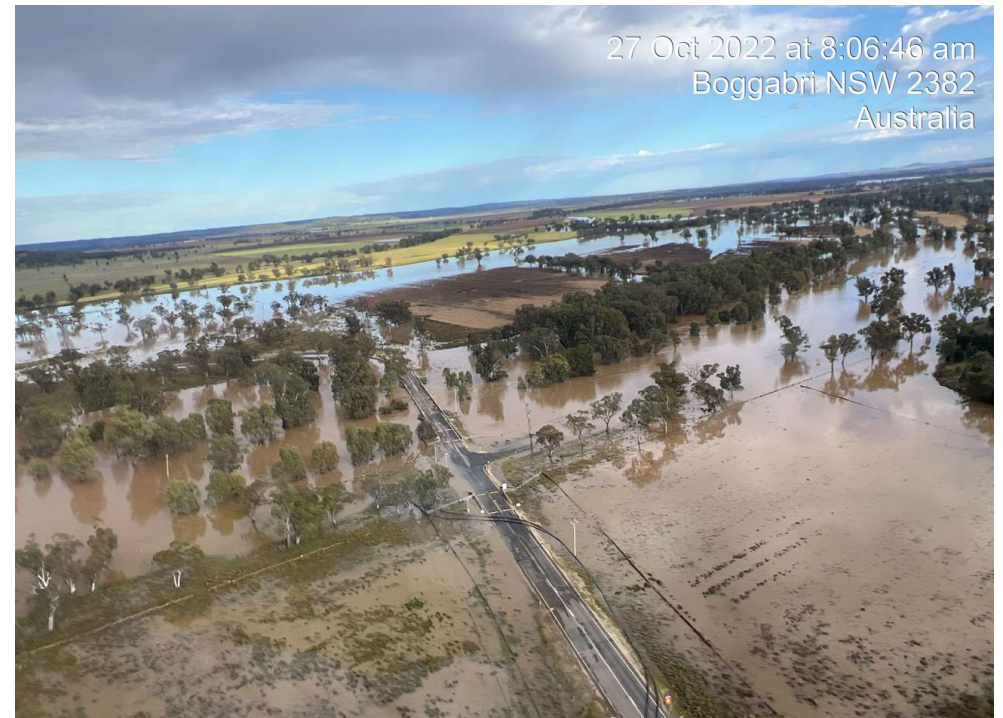
COVID-19 Management

- Continued monitoring of compliance with current COVID-19 preventative measures.
- Continued monitoring of NSW Public Health Order
- Ensuring our workforce remains informed.
- COVID and Influenza Vaccination scheme in place.

Continuous improvement Projects

- Monitoring progress with Health and Safety Improvement Plan.
- Improvement focus for Fatigue & Chemical Management onsite
- Critical Control Monitoring implementation continuing with focus on Identified hazards & risks

Recent Flooding



Recent Flooding



Environmental Monitoring

All data is summarised in detail in
the Monitoring Report supplied

Maules Creek Coal
November 2022



WHITEHAVEN COAL

Environmental Monitoring

Air Quality Monitoring

Maules Creek Coal
November 2022



WHITEHAVEN COAL

Depositional Dust

July – September 2022

The annual reporting period (12 monthly rolling annual average) remained below the relevant Project Approval (PA 10_0138) criteria of $4\text{g/m}^2/\text{month}$ for the respective monitoring points.

MONTH	MC1	MC2	MC3	MC4
July	28.7 ^c	0.5	1.9	2.2
August	7.2 ^c	0.2	1.2	0.6
September	12.9 ^c	0.3	2.4	1.0
12 MONTH ROLLING AVERAGE	2.3	0.9	2.0	1.1

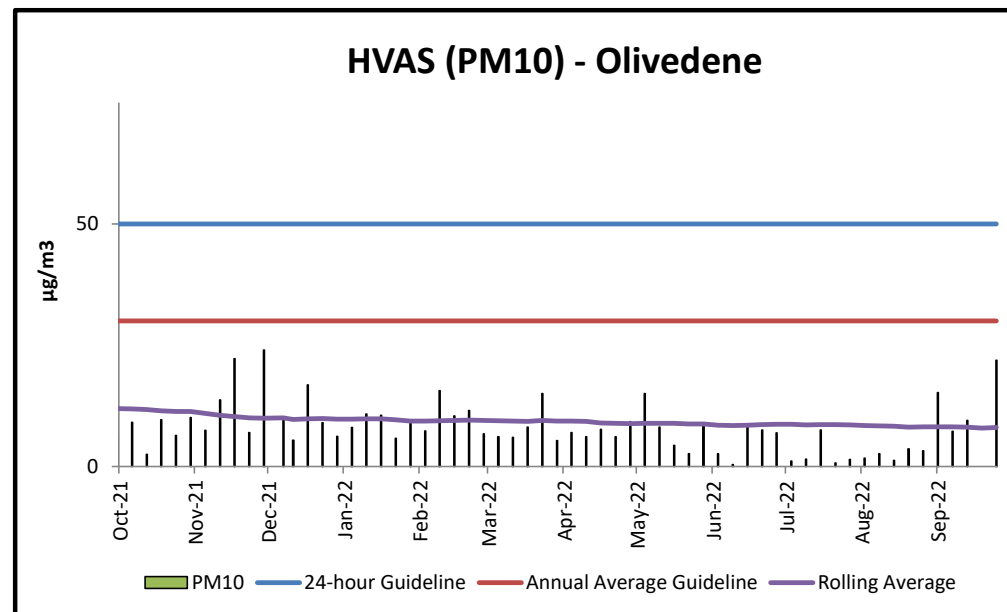
^c samples contaminated by bird dropping, decomposed insects or vegetable matter.

HVAS

High Volume Air Sampler

- The HVAS monitor is located on 'Olivedene'
- Data is public ally available
- No exceedances recorded during the 24 hour average of $50 \mu\text{g}/\text{m}^3$
- The Rolling Annual Average was recorded at **$8.0 \mu\text{g}/\text{m}^3$** , which is below the Annual Average Guideline of $30 \mu\text{g}/\text{m}^3$.

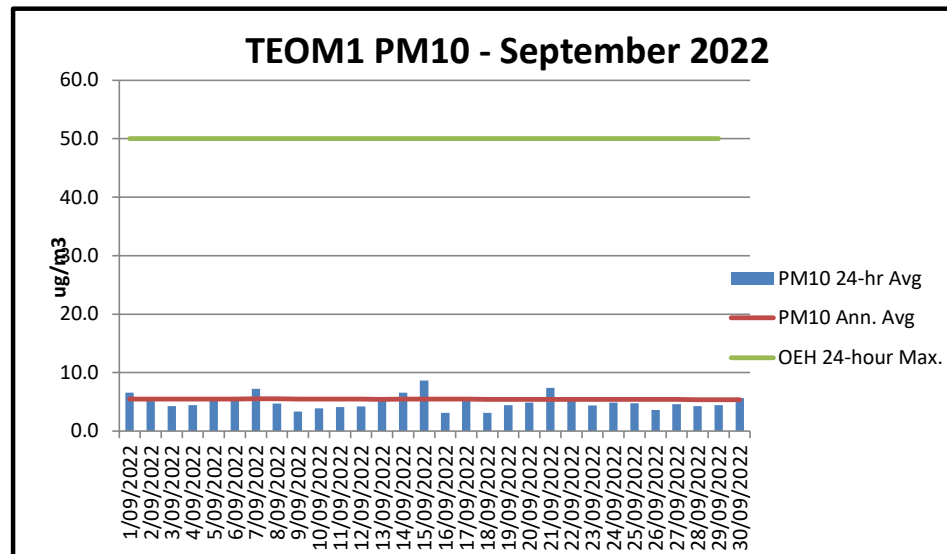
HVAS



TEOM (PM10)

Tapered element oscillating microbalance

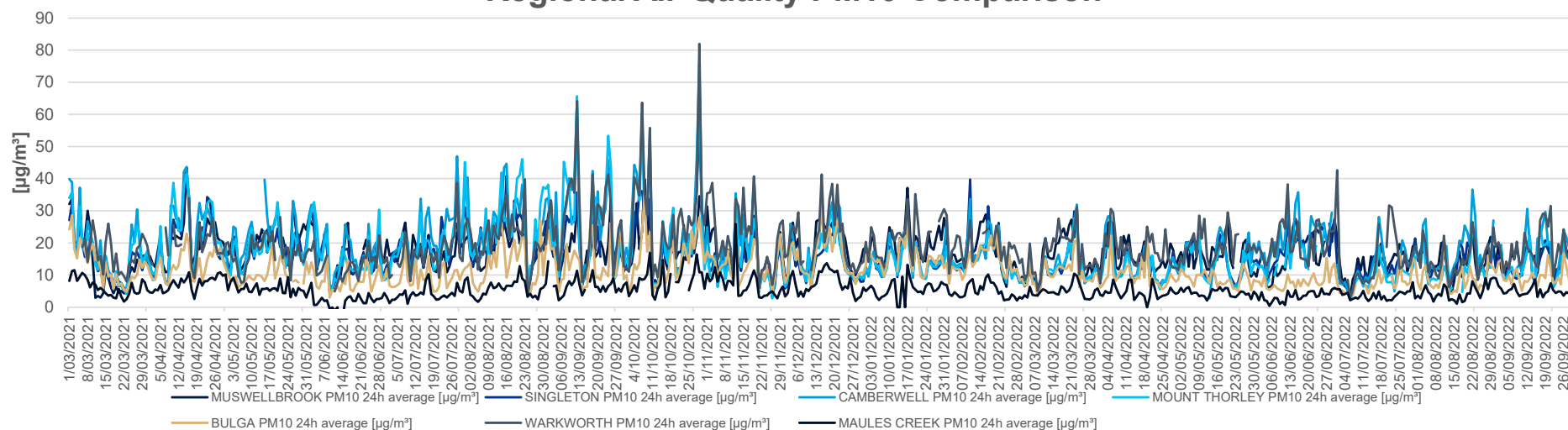
- Publicly available results of TEOM1 available on the EPA website. Annual rolling average for TEOM 1 is $5.4 \mu\text{g}/\text{m}^3$ at 30 September 2022 (criteria $30 \mu\text{g}/\text{m}^3$).



Air Quality Monitoring Rolling 12 Months

Annual Reporting Data 1 October 2021 – 30 September 2022

Regional Air Quality PM10 Comparison



12 monthly	TAMWORTH PM10	MUSWELLBROOK PM10	SINGLETON PM10	CAMBERWELL PM10	MOUNT THORLEY PM10	BULGA PM10	WARKWORTH PM10	MAULES CREEK PM10
Annual Average	11	17	15	17	14	11	19	5
Max 24hr Ave	36	40	58	76	71	35	82	26

Environmental Monitoring

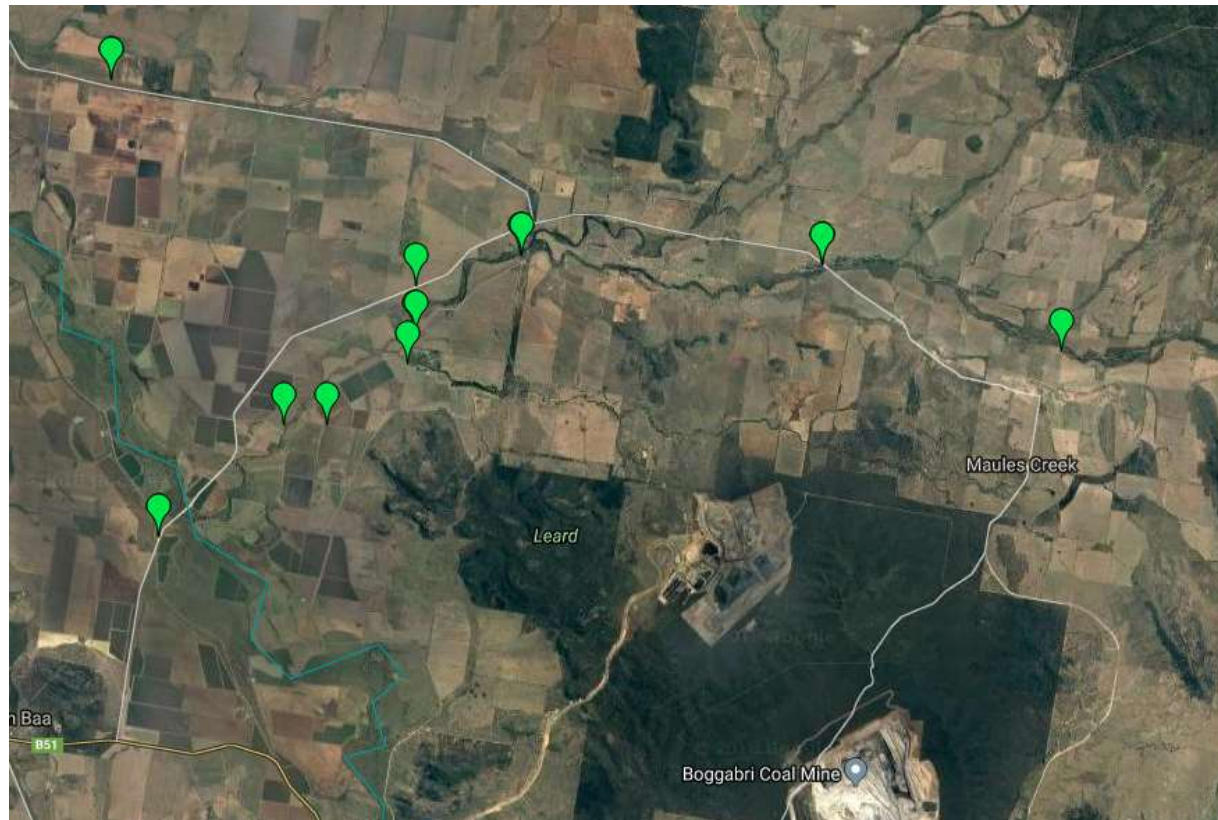
Groundwater

Maules Creek Coal Mine
November 2022

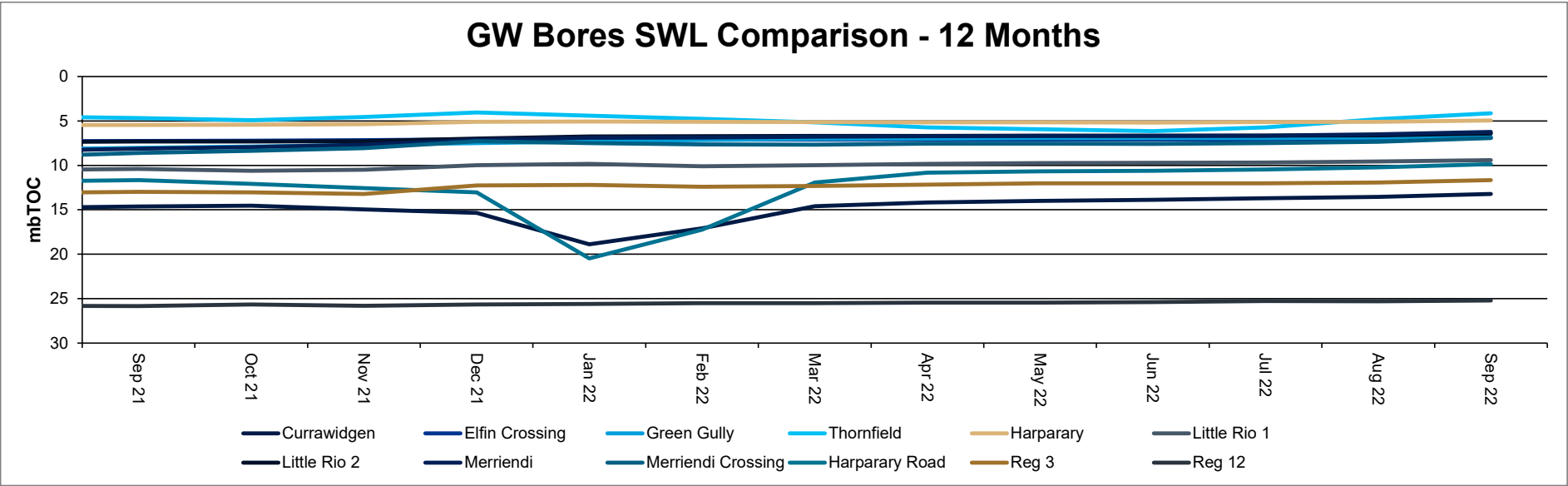


WHITEHAVEN COAL

Monitoring Locations



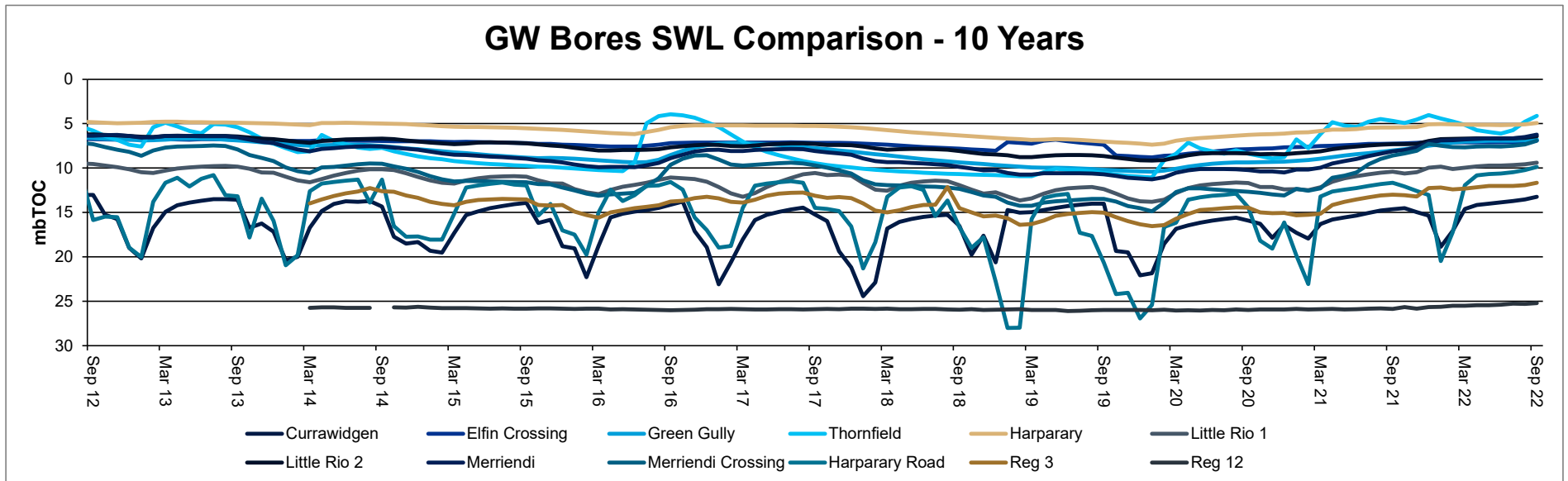
Groundwater Levels



* Note Reg12 and Reg3 both within Boggabri Volcanics

Source: NSW DPI- Water & MCCM monitoring data

Groundwater Levels

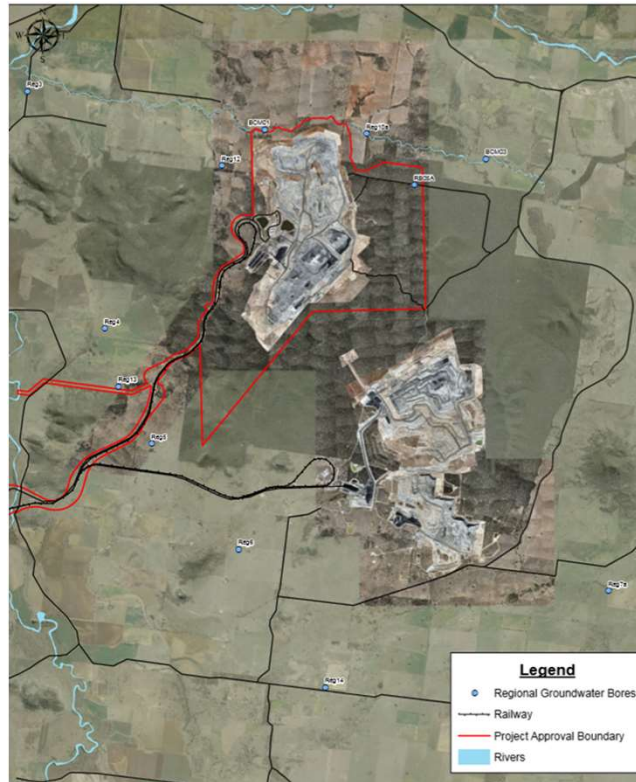


* Note Reg12 and Reg3 both within Boggabri Volcanics

Source: NSW DPI- Water & MCCM monitoring data

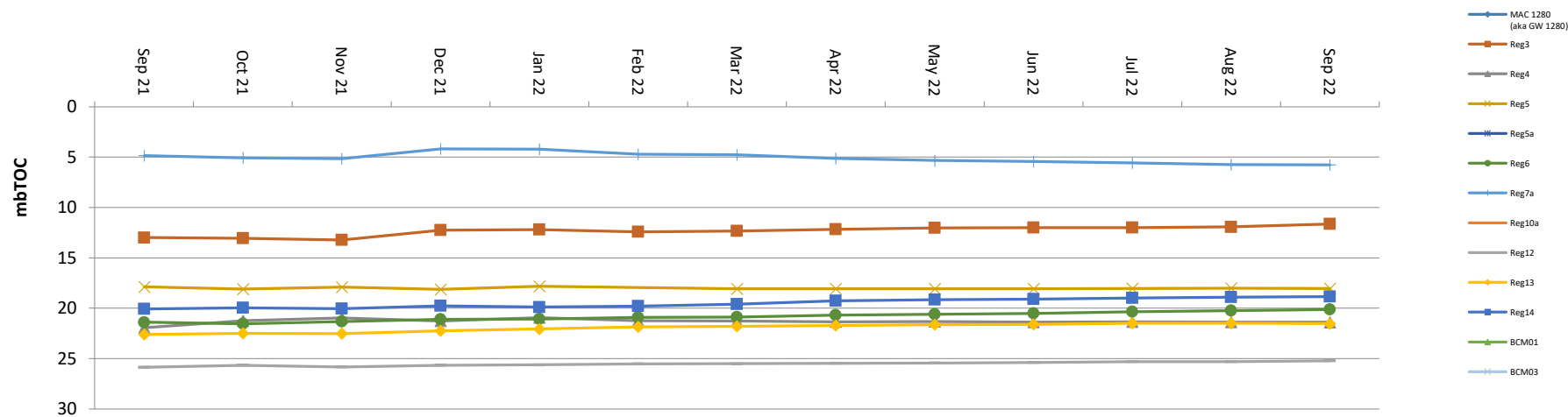
Standing Water Levels

Regional Groundwater Bores



Standing Water Levels

Regional GW - Standing Water Level September 2021 - September 2022



Approvals Update

Maules Creek Coal Mine
November 2022



WHITEHAVEN COAL

Modification 9 – BOS and ETL

The Modification would comprise the following:

- modification of the MCCM biodiversity offset strategy to generally align the offset areas required under PA 10_0138 with the offset areas approved to meet the requirements of the EPBC Act approval (EPBC 2010/5566); and
- construction of an ETL (including poles and overhead wires) within a 20 metre (m) corridor to connect the Roma Bore pump to an existing 11 kilovolt (kV) powerline which runs approximately 700 m to the west of the Roma.
- No changes to the approved MCCM mining operation are proposed as part of the Modification.
- The Modification Report will be lodged and subsequently placed on public exhibition by DPE.



Water

Maules Creek Coal Mine
November 2022



Clean Water Diversion

Discharges July – September 2022

Dam	Quantity Discharged
Highwall Dam 08	0 ML*
Highwall Dam 09	0 ML*
Highwall Dam 10	8.3 ML
Highwall Dam 11	11 ML
Western Clean Water Dam	40.7 ML

* No inflows received by dam

All inflow and outflow for the dams for the quarter is publicly available at

<https://whitehavencoal.com.au/our-business/our-assets/maules-creek-mine/>

Autonomous Haulage System

AHS Update

Maules Creek Coal Mine
November 2022



WHITEHAVEN COAL

AHS Project Works



AHS Expansion

The AHS system at Maules Creek has expanded to excavator fleets, with a total of 18 trucks operating at any one time.

The Autonomous trucks are currently completing a 12.6km round trip haul, averaging 52 minutes per haul cycle. This is creating a large benefit for the entire operation, easing the total resourcing requirement for the operation.

To accommodate for the extra autonomous fleet, there have been significant training requirements undertaken. On each operational crew there is now a minimum of 22 people trained, ready to operate amongst the autonomous trucks.

Old issue – When the autonomous trucks had an onboard system fault, operators had to man the autonomous trucks to relocate them, this created inherent hazards when outside of the vehicles equipped with high precision GPS.

New Features – All onboard system faults can now be simply reset in all areas of the autonomous zone via a remote control, removing the requirement to exit the instrumented vehicle. Providing safer, more productive workflow for the production team



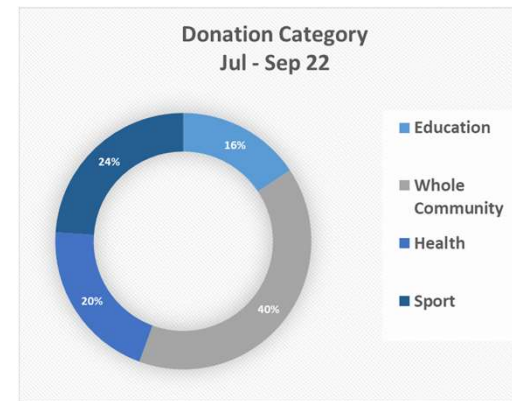
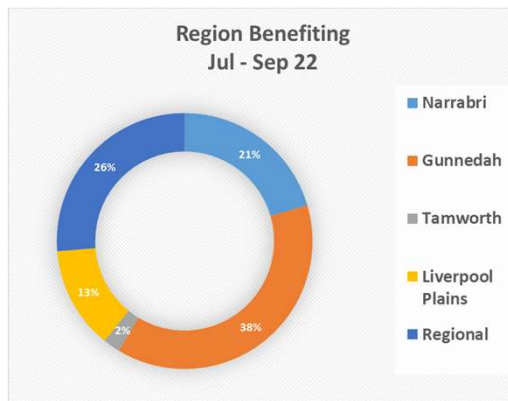
Community

Maules Creek Coal Mine
November 2022



Community

- Whitehaven continues to support the local Community with donations and sponsorships.
- More information on Sponsorships and Donations can be found at:
 - <https://whitehavencoal.com.au/sustainability/community/donations-sponsorships/>
- Donations for July – Sept 2022 over \$92,200 spent in the local community.
- Some highlights – Dorothea Mackellar Poetry Awards, Gunnedah Meals on Wheels, Narrabri Harmony Choir, Swimming Gunnedah Incorporated, Narrabri Junior Rugby League, Gunnedah Homes for the Aged.





Thank you

www.whitehavencoal.com.au



WHITEHAVEN COAL

Maules Creek Coal Mine Community Consultative Committee Meeting #39

Environmental Monitoring Report For the Q3 period, July – September 2022

Attended Noise Monitoring

Maules Creek Coal (MCC) engaged an independent acoustic consultant to conduct LAeq (15minutes) and LA1 (1 minute) attended noise monitoring at six monitoring locations on site.

A. LAeq, 15minute; GENERATED BY MCCM AGAINST OPERATIONAL DAY NOISE CRITERIA; JULY – SEPTEMBER 2022.

The results show that MCCM is within EPL 20221 compliance limits, that operations did not exceed the applicable LAeq (15minute) criteria of 35dB and the EPA's Noise Policy for Industry compliance guidelines.

Table 1 - July Noise Monitoring

Location	Start Date and Time	Wind Speed m/s	Rainfall mm	Criterion dB	Criterion Applies? ¹	MCCP LAeq dB ²	Exceedance dB ³
NM1	14/07/2022 22:30	0.3	0.0	35	Yes	25	Nil
NM2	14/07/2022 23:30	0.4	0.0	39	Yes	30	Nil
NM3	14/07/2022 23:30	0.4	0.0	35	Yes	<25	Nil
NM4	14/07/2022 23:00	0.5	0.0	35	Yes	<20	Nil
NM5	14/07/2022 22:00	1.2	0.0	35	Yes	IA	Nil
NM6	14/07/2022 23:55	0.3	0.0	35	Yes	<25	Nil

- Noise emission limits do not apply during periods of rainfall or winds greater than 3 metres per second (at a height of 10 metres);
- Site-only LAeq,15minute attributed to MCCP, including modifying factors if applicable; and
- NA in exceedance column means criterion was not applicable due to atmospheric conditions outside those specified in project approval.

Table 2 – August Noise Monitoring

Location	Start Date and Time	Wind Speed m/s	Rainfall mm	Criterion dB	Criterion Applies? ¹	MCCP LAeq dB ²	Exceedance dB ³
NM1	22/08/2022 22:30	1.1	0.0	35	Yes	IA	Nil
NM2	22/08/2022 23:30	0.6	0.0	39	Yes	IA	Nil
NM3	22/08/2022 23:32	0.7	0.0	35	Yes	IA	Nil
NM4	22/08/2022 23:00	0.6	0.0	35	Yes	IA	Nil
NM5	22/08/2022 22:00	0.6	0.0	35	Yes	IA	Nil
NM6	22/08/2022 23:56	0.3	0.0	35	Yes	IA	Nil

- Notes:
- Noise emission limits do not apply during periods of rainfall or winds greater than 3 metres per second (at a height of 10 metres).
 - Site-only LAeq,15minute attributed to MCCP, including modifying factors if applicable.
 - NA in exceedance column means criterion was not applicable due to atmospheric conditions outside those specified in project approval.

Table 3 – September Noise Monitoring

Location	Start Date and Time	Wind Speed m/s	Rainfall mm	Criterion dB	Criterion Applies? ¹	MCCP LAeq dB ²	Exceedance dB ³
NM1	13/09/2022 22:30	0.5	0	35	Yes	IA	Nil
NM2	13/09/2022 23:30	0.3	0	39	Yes	25	Nil
NM3	13/09/2022 23:27	0.5	0	35	Yes	26	Nil
NM4	13/09/2022 23:00	0.3	0	35	Yes	IA	Nil
NM5	13/09/2022 22:00	0.8	0	35	Yes	IA	Nil
NM6	13/09/2022 23:56	0.4	0	35	Yes	IA	Nil

Notes: 1. Noise emission limits do not apply during periods of rainfall or winds greater than 3 metres per second (at a height of 10 metres).
2. Site-only LAeq,15minute attributed to MCCP, including modifying factors if applicable.
3. NA in exceedance column means criterion was not applicable due to atmospheric conditions outside those specified in project approval.

B. LA1, 1minute; GENERATED BY MCC AGAINST OPERATIONAL NIGHT NOISE CRITERIA; JULY – SEPTEMBER 2022.

MCC's EPL 20221 also has a '1 Minute - Night' criteria (LA1) that applies from 10pm to 7am Monday to Saturday & 10pm to 8am Sundays and Public Holidays. Results are shown on tables 4-6.

The results show that MCCM is within EPL 20221 compliance limits, that operations did not exceed the applicable LA1 (1minute) criteria of 45dB.

Table 4– July Noise Monitoring – Night

Location	Start Date and Time	Wind Speed m/s	Rainfall mm	Criterion dB	Criterion Applies? ¹	MCCP LA1,1min dB ²	Exceedance dB ³
NM1	14/07/2022 22:30	0.3	0.0	45	Yes	27	Nil
NM2	14/07/2022 23:30	0.4	0.0	45	Yes	35	Nil
NM3	14/07/2022 23:30	0.4	0.0	45	Yes	27	Nil
NM4	14/07/2022 23:00	0.5	0.0	45	Yes	35	Nil
NM5	14/07/2022 22:00	1.2	0.0	45	Yes	IA	Nil
NM6	14/07/2022 23:55	0.3	0.0	45	Yes	<25	Nil

1. Noise emission limits do not apply during periods of rainfall or winds greater than 3 metres per second (at a height of 10 metres);
2. Site-only LA1,1minute attributed to MCCP; and
3. NA in exceedance column means criterion was not applicable due to atmospheric conditions outside those specified in project approval.

Table 5 –August Noise Monitoring – Night

Location	Start Date and Time	Wind Speed m/s	Rainfall mm	Criterion dB	Criterion Applies? ¹	MCCP L _{A1,1min} dB ²	Exceedance dB ³
NM1	22/08/2022 22:30	1.1	0.0	45	Yes	IA	Nil
NM2	22/08/2022 23:30	0.6	0.0	45	Yes	IA	Nil
NM3	22/08/2022 23:32	0.7	0.0	45	Yes	IA	Nil
NM4	22/08/2022 23:00	0.6	0.0	45	Yes	IA	Nil
NM5	22/08/2022 22:00	0.6	0.0	45	Yes	IA	Nil
NM6	22/08/2022 23:56	0.3	0.0	45	Yes	IA	Nil

Notes: 1. Noise emission limits do not apply during periods of rainfall or winds greater than 3 metres per second (at a height of 10 metres).
2. Site-only L_{A1,1minute} attributed to MCCP.
3. NA in exceedance column means criterion was not applicable due to atmospheric conditions outside those specified in project approval.

Table 6 – September Noise Monitoring – Night

Location	Start Date and Time	Wind Speed m/s	Rainfall mm	Criterion dB	Criterion Applies? ¹	MCCP L _{A1,1min} dB ²	Exceedance dB ³
NM1	13/09/2022 22:30	0.5	0	45	Yes	IA	Nil
NM2	13/09/2022 23:30	0.3	0	45	Yes	28	Nil
NM3	13/09/2022 23:27	0.5	0	45	Yes	30	Nil
NM4	13/09/2022 23:00	0.3	0	45	Yes	IA	Nil
NM5	13/09/2022 22:00	0.8	0	45	Yes	IA	Nil
NM6	13/09/2022 23:56	0.4	0	45	Yes	IA	Nil

Notes: 1. Noise emission limits do not apply during periods of rainfall or winds greater than 3 metres per second (at a height of 10 metres).
2. Site-only L_{A1,1minute} attributed to MCCP.
3. NA in exceedance column means criterion was not applicable due to atmospheric conditions outside those specified in project approval.

Wind Direction during Attended Monitoring

Wind direction data is collected from the Maule's Creek Coal Mine (MCCM) Automated Weather Station (AWS). Wind data for the duration of the attended monitoring assessment, recorded at the MCCM AWS is presented in the table below.

Table 7 - Prevailing Wind Direction

Monitoring Date	Prevailing Wind Direction
July	SSE
August	SW
September	S

Blast Monitoring

There was 29 blasts at MCCM during Q3 2022. All blast monitoring results recorded within the reporting period have complied with applicable overpressure and ground vibration limits specified in the respective approvals.

Table 8 – Blast Results Summary

Parameter	Units	Frequency	Number	Average	Max	100% Limit	Exceedance (Yes / No)
Noise	dB (Lin Peak)	All	29	92.16	111.1	120	No
Vibration	mm/s		29	0.15	0.64	10	No

Air Quality

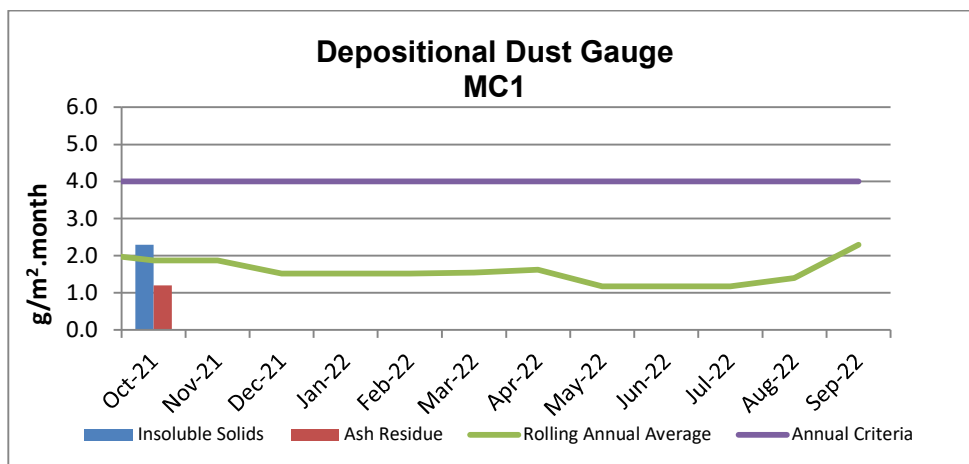
A. Total Depositional Dust

The 12 monthly rolling annual average remains below the relevant Project Approval (PA 10_0138) criteria of 4g/m²/month for the respective monitoring points.

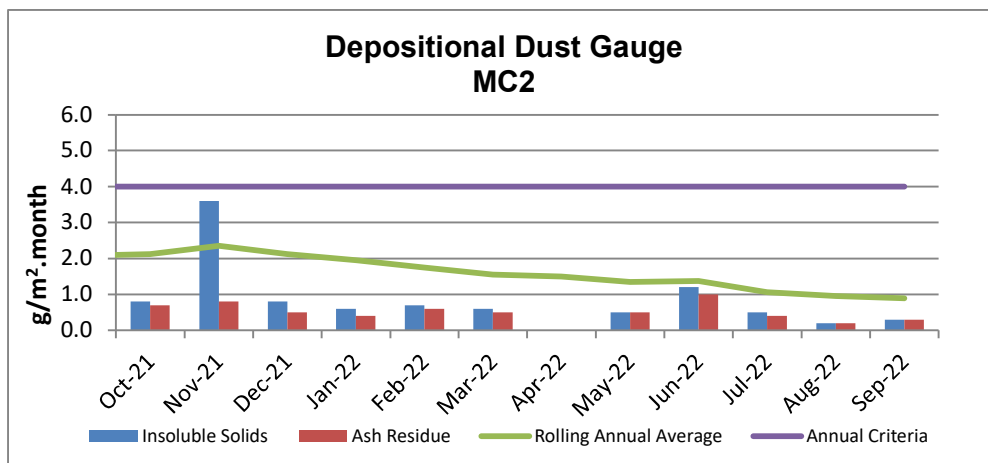
Table 9 – Deposited Dust Gauge Results [g/m²/month]

MONTH	MC1	MC2	MC3	MC4
July	28.7 ^c	0.5	1.9	2.2
August	7.2 ^c	0.2	1.2	0.6
September	12.9 ^c	0.3	2.4	1.0
12 MONTH ROLLING AVERAGE	2.3	0.9	2.0	1.1

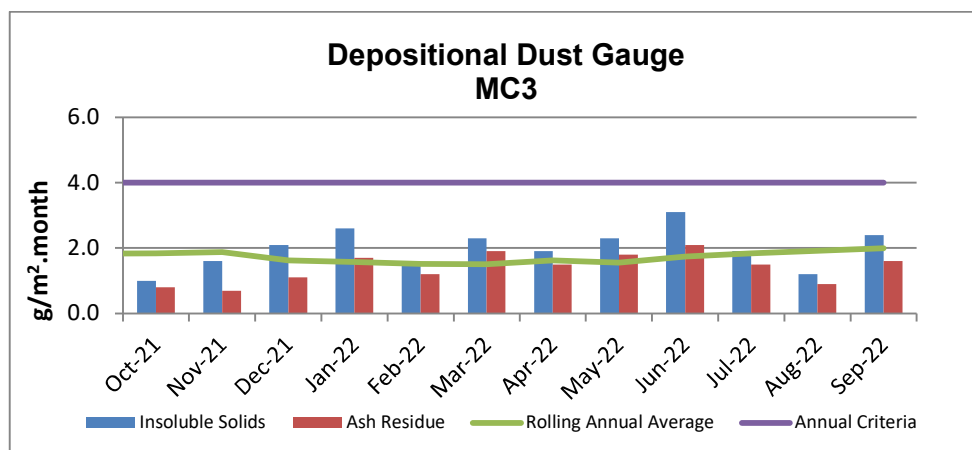
^c samples contaminated by bird dropping, decomposed insects or vegetable matter.



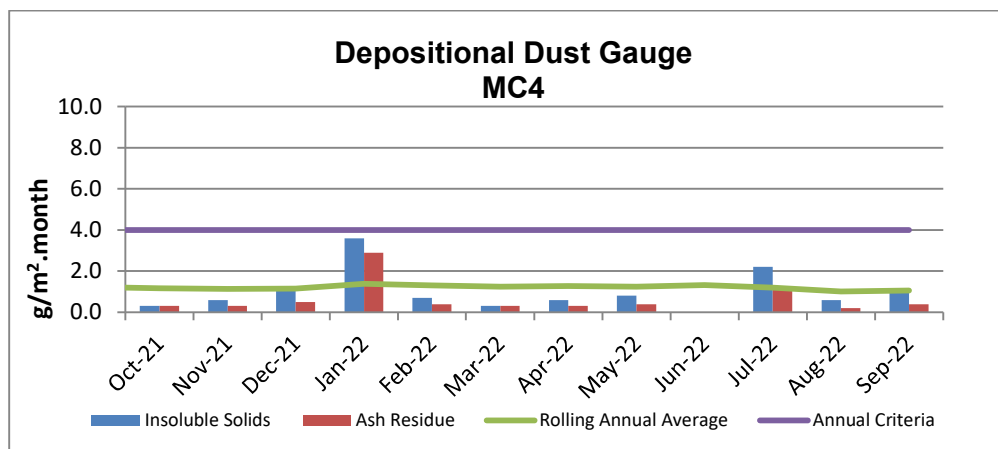
* Blank cells indicate sample periods where the sample has been contaminated and excluded from the results tables due to contaminated material (insect larvae, bird droppings, vegetation etc.).



* Blank cells indicate sample periods where the sample has been contaminated and excluded from the results tables due to contaminated material (insect larvae, bird droppings, vegetation etc.).



* Blank cells indicate sample periods where the sample has been contaminated and excluded from the results tables due to contaminated material (insect larvae, bird droppings, vegetation etc.).

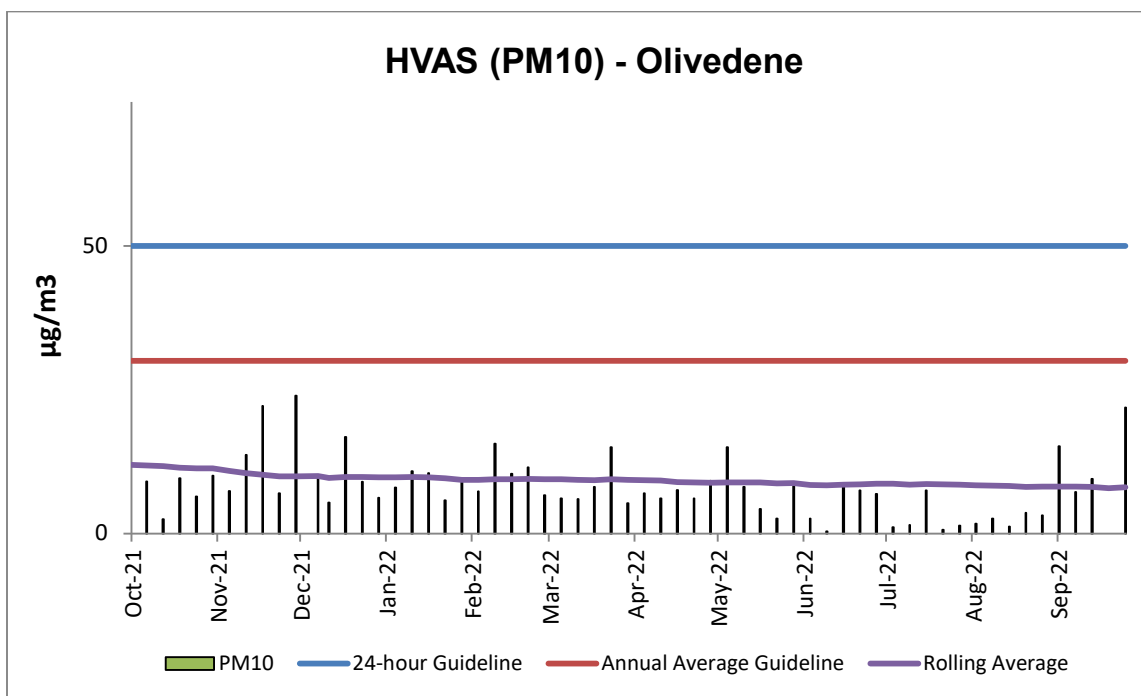


* Blank cells indicate sample periods where the sample has been contaminated and excluded from the results tables due to contaminated material (insect larvae, bird droppings, vegetation etc.).

B. High Volume Air Sampling (HVAS)

The HVAS monitor is located on the property 'Olivedene,' a mine owned property on Therribri Road. During past 12 months, there have been no exceedances of the 24-hour average of 50 $\mu\text{g}/\text{m}^3$.

HVAS PM₁₀ Rolling Annual Average as of September was **8.0 $\mu\text{g}/\text{m}^3$** , which is below the Annual Average Guideline of 30 $\mu\text{g}/\text{m}^3$.



C. TEOM - PM10 Results

The annual rolling average for PM10 at the Maules Creek Coal TEOM1 was **5.4 $\mu\text{g}/\text{m}^3$** , which is below the Project Approval annual average criteria of 30 $\mu\text{g}/\text{m}^3$ as shown in the following figure. There have been no exceedances of the 24-hour average for Q2.

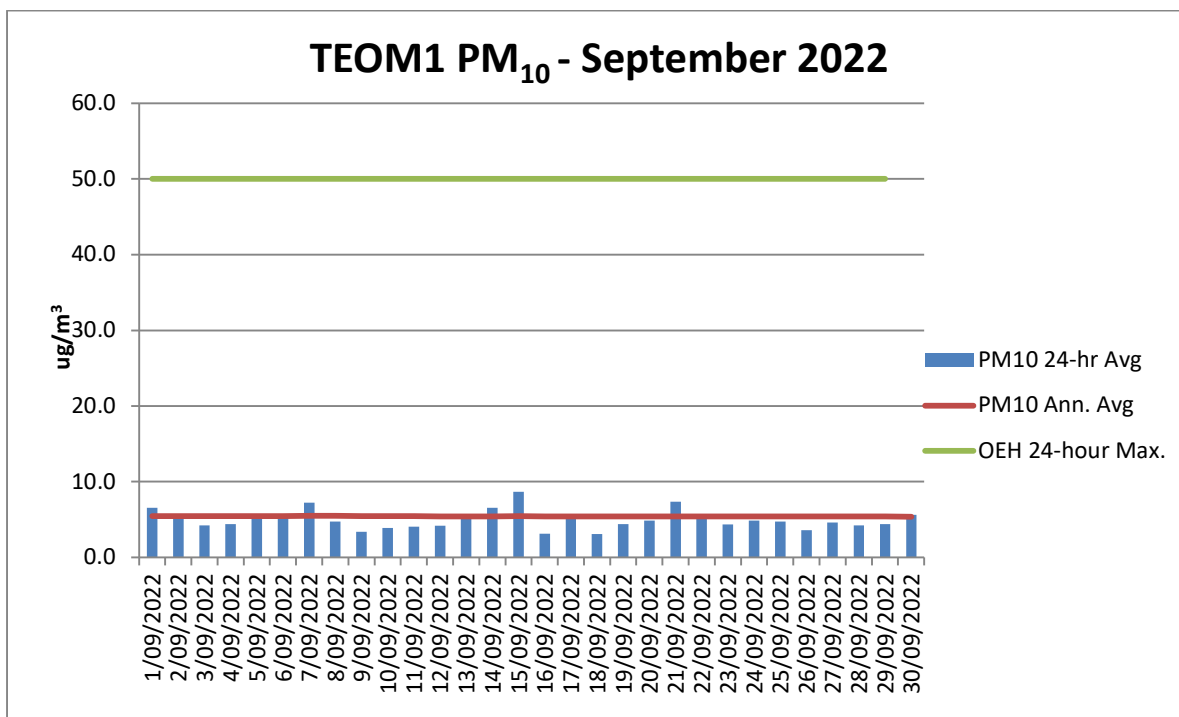


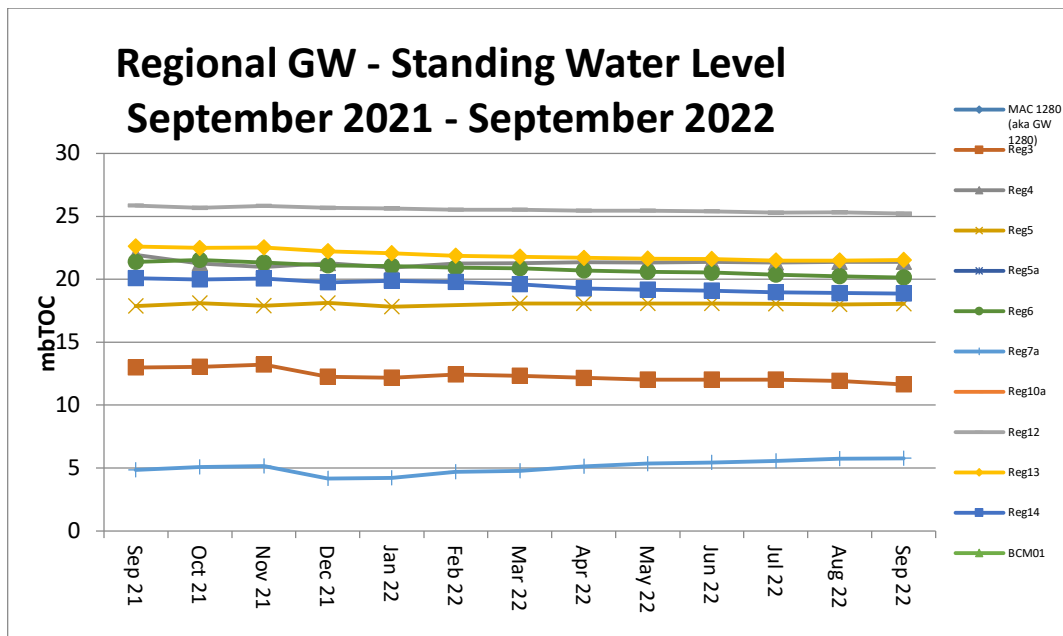
Figure 1 - TEOM Result – Particulate Matter PM₁₀µg/m³

* Blank columns indicate sample periods where there was either power outage, maintenance or other related causes.

Water Monitoring

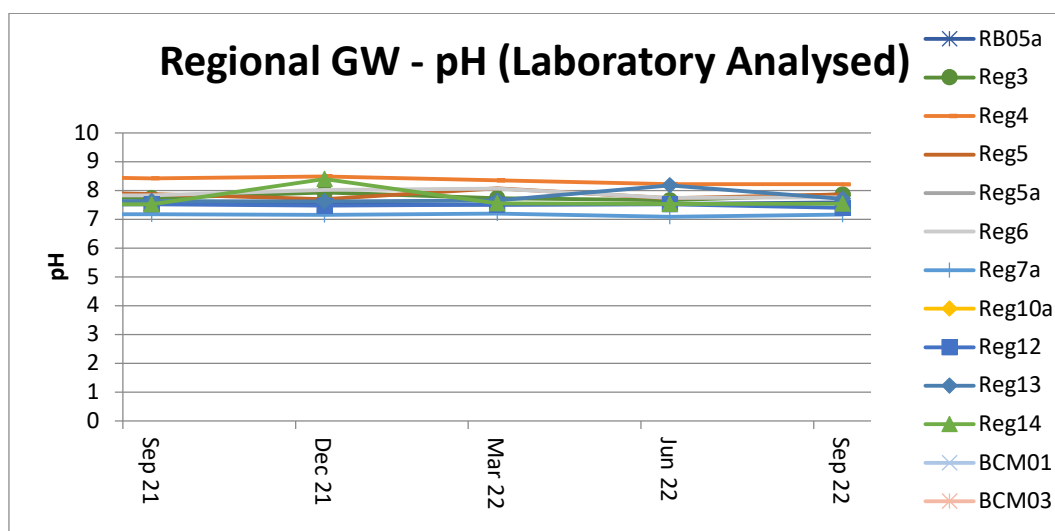
A. Groundwater

Groundwater monitoring results in open standpipe piezometers show levels to be relatively stable. The Regional bores were installed between Q4, 2013 and Q1, 2014. BCM01, BCM03, Reg10 are shallow bores which have remained dry since construction in 2013.



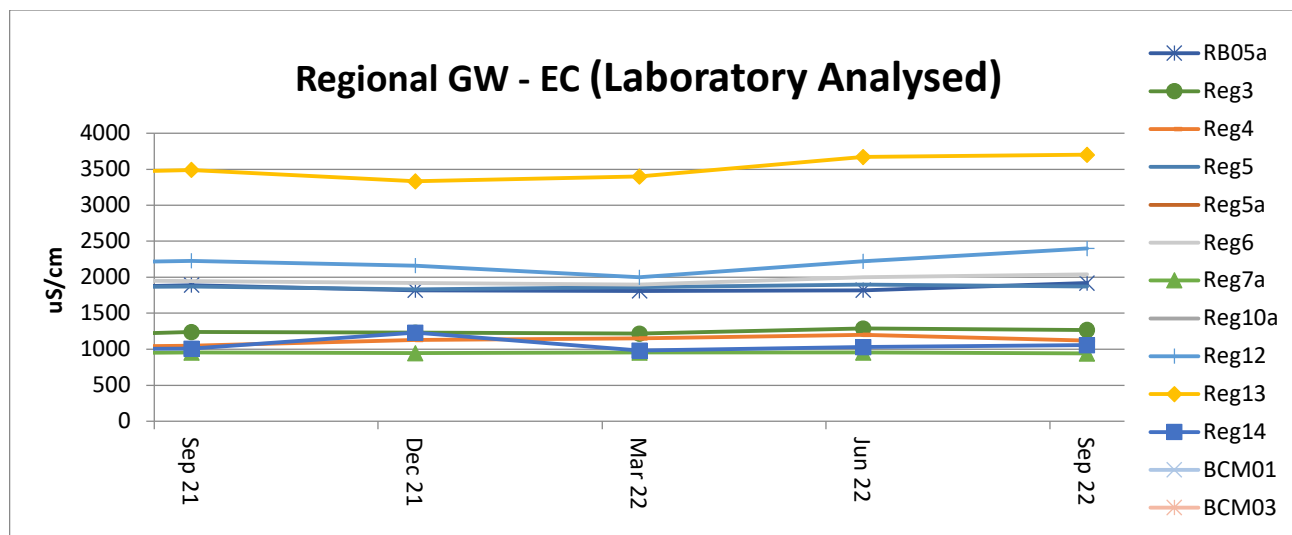
Acidity / Alkalinity (pH)

Over the past twelve months pH readings across the regional bores have remained static with very little fluctuation.



Electrical Conductivity

Laboratory Electrical Conductivity (EC) levels are all within historic groundwater EC range of 500 $\mu\text{S}/\text{cm}$ to 2,500 $\mu\text{S}/\text{cm}$, with the exception of monitoring bore Reg13 which has a historic groundwater EC range of 2,500 $\mu\text{S}/\text{cm}$ to 4,100 $\mu\text{S}/\text{cm}$. Within the last twelve months EC has remained static.

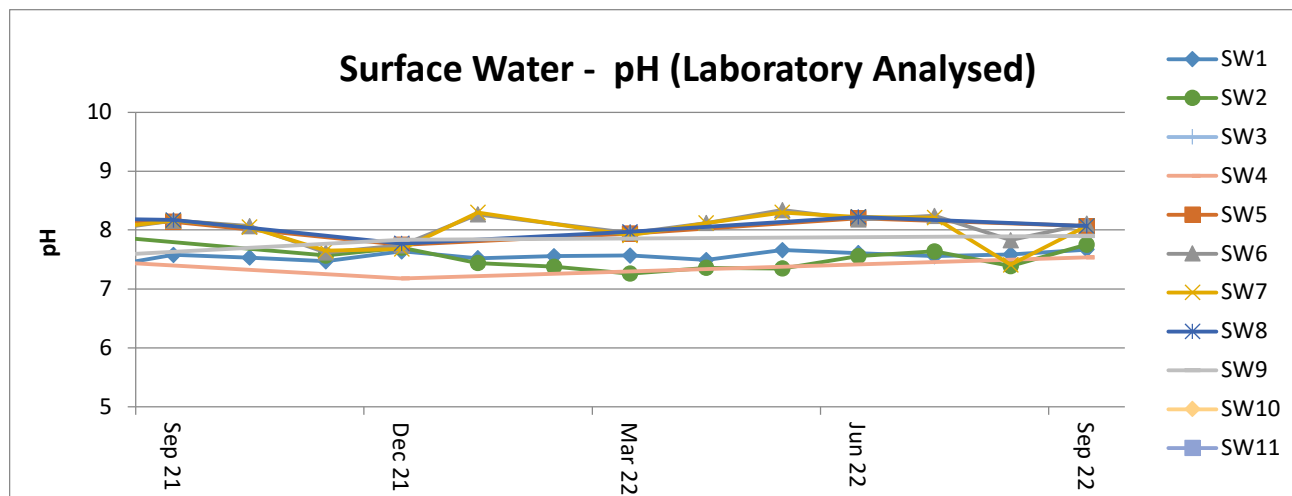


B. Surface Water – Creeks and Rivers

Routine surface water monitoring is conducted in surrounding creeks and rivers on a monthly basis. Results for parameters including pH, EC and Total Suspended Solids (TSS) are shown in the figures below. There are eleven surface water monitoring points, of which a maximum of six sites were able to be sampled during Q3 2022.

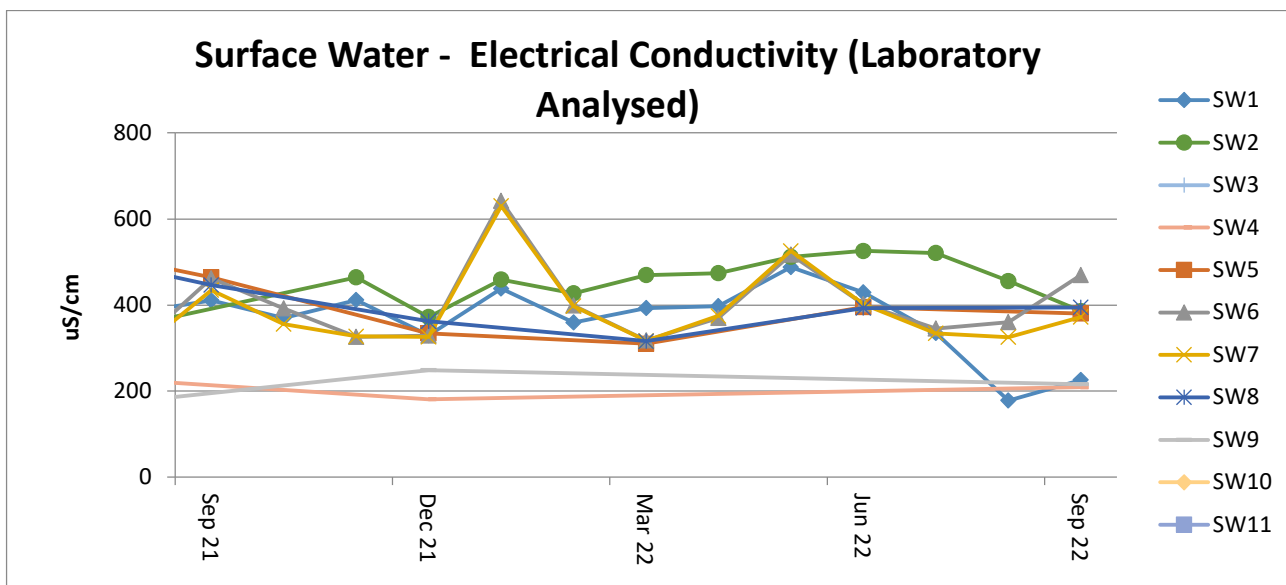
Acidity / Alkalinity (pH)

Monitoring results for pH in creeks and rivers surrounding MCCM are all trending within the ANZECC range for Irrigation, Ecosystem Health and Recreation.



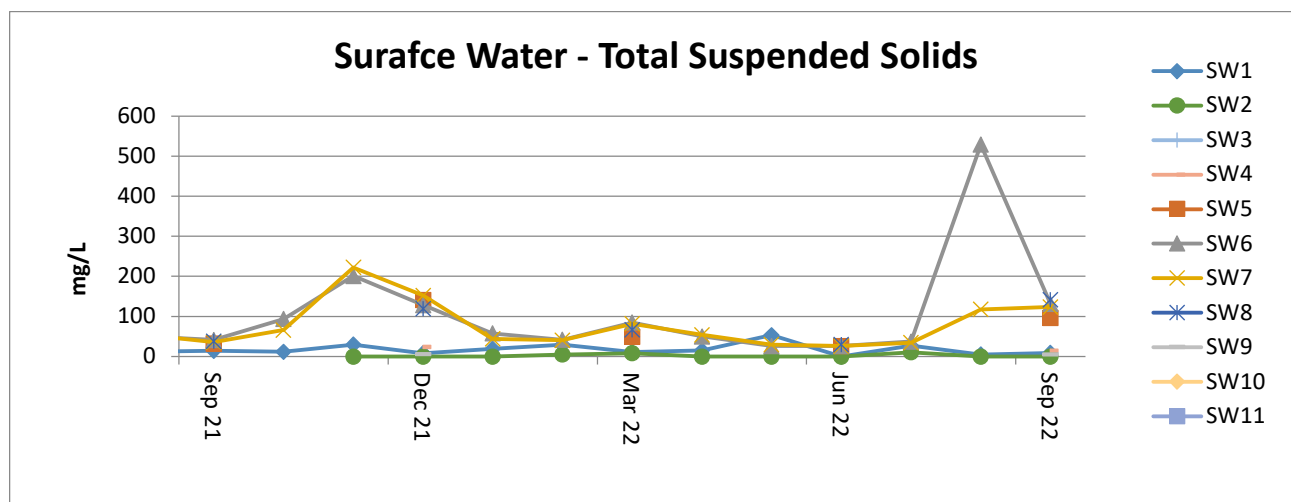
Electrical Conductivity

Surface water EC trends have remained consistent with SW5, SW6, SW7 and SW8 all historically variable. SW5, SW6, SW7 and SW8 are points along the Namoi River which are subject to regulated and variable flow regimes.



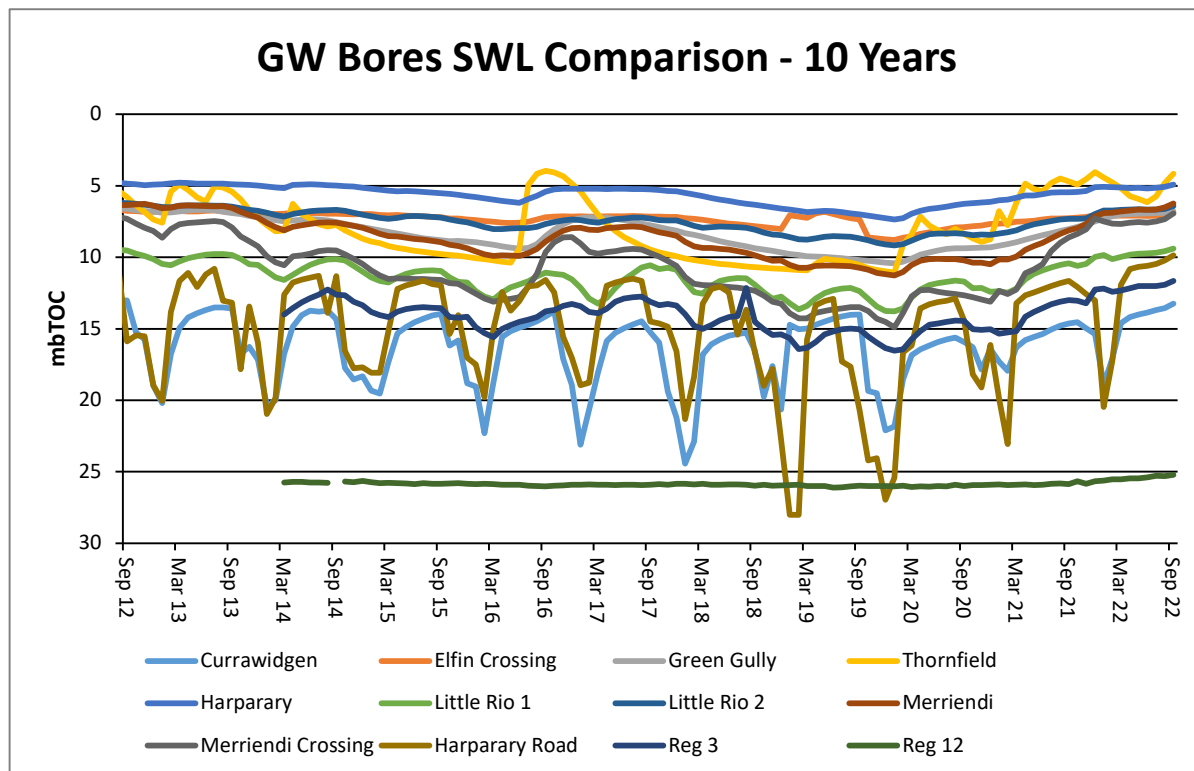
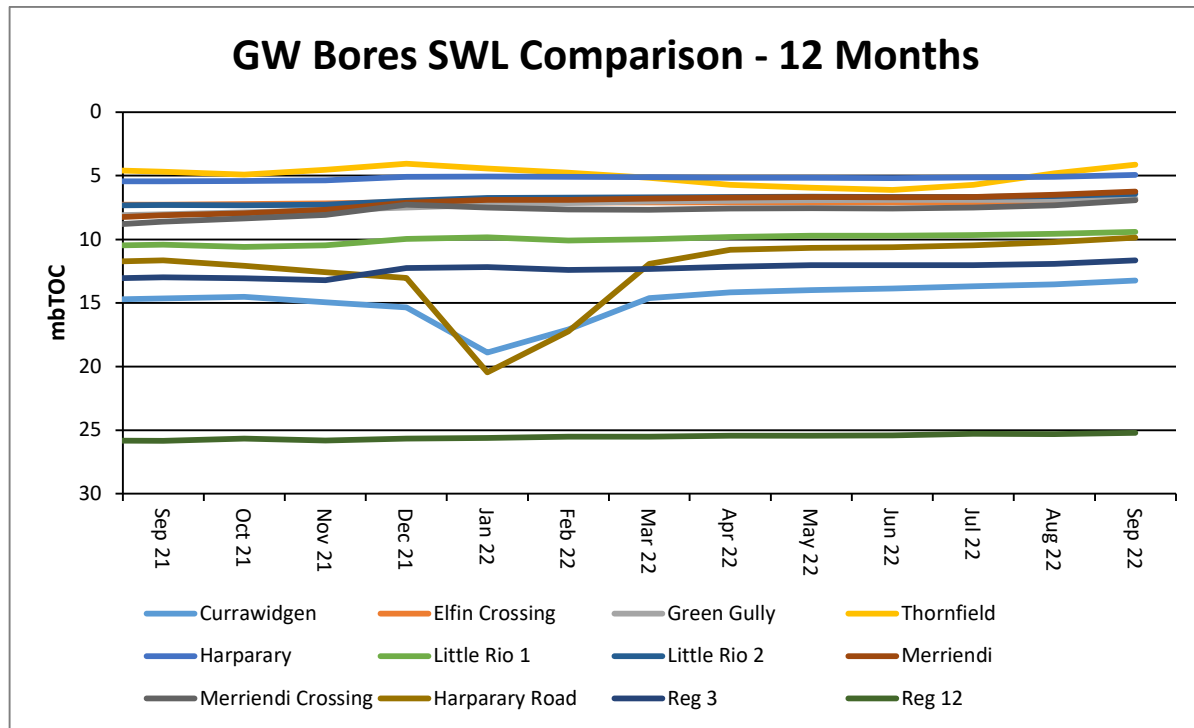
Total Suspended Solids (TSS)

Surface water TSS trends have remained generally consistent with historical results. SW5, SW6, SW7 and SW8 are historically variable as they are located along the Namoi River which is subject to regulated and variable flow regimes. The Q3 results were elevated due to significant rainfall events, as demonstrated on the graph below TSS levels have since decreased



Regional Groundwater monitoring

Maules Creek Coal Mine monitors regional bores across the region.



Rehabilitation

Progressive rehabilitation works are ongoing. MCC is on track to complete 40ha of rehabilitation for CY23.

Feral Animal Management

Weather constraints have put the proposed MCC feral animal management control program on hold. The program will be revisited early 2023.

Community Complaints

No complaints were received during Q3 2022.